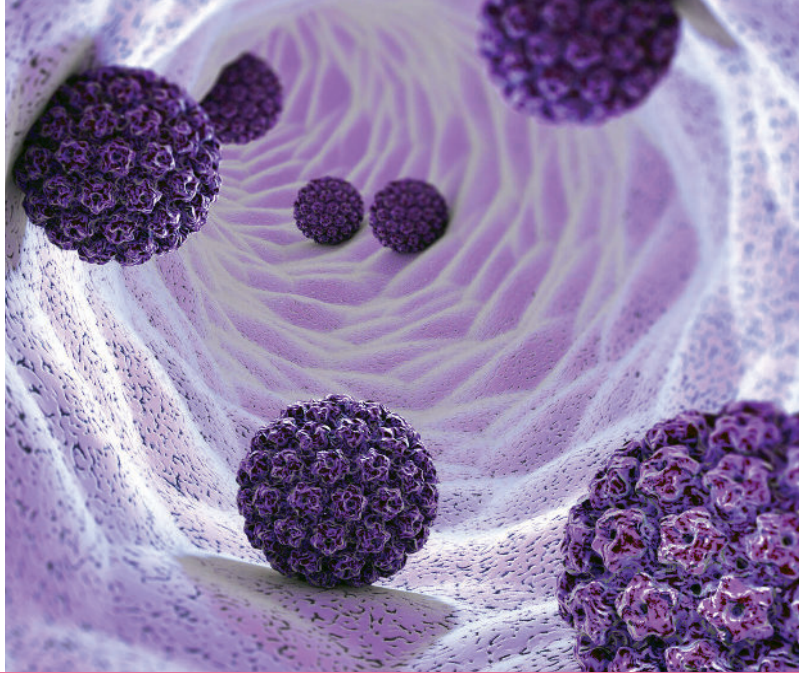


NOVAPLEX™ HPV28 Assay* & NOVAPLEX™ II HPV HR Assay*

Multiple DNA targets, one efficient test



HUMAN PAPILLOMAVIRUS (HPV)

HIGH MULTIPLEX REAL-TIME PCR ASSAYS

Human papillomavirus (HPV) is known to be the leading cause of cervical cancer in women. Every year, nearly 12,000 women living in the U.S. develop cervical cancer, and more than 4,000 women die per year from cervical cancer. HPV can also cause other cancers, including cancer of the vulva, vagina, penis, or anus. It can also cause cancer in the back of the throat (oropharyngeal cancer). In most cases, HPV goes away on its own within two years without any health problems, but it can cause health problems like genital warts and cancer if it does not go away.¹

REFERENCES

1. Cervical cancer statistics | cdc. (2023, June 6). <https://www.cdc.gov/cancer/cervical/statistics/index.htm>

KEY FEATURES

Broad coverage of HPV pathogens

- Test for 28 HPV types, including 14 high-risk types, and 5 probable high-risk, and 9 low-risk types
- 4 hours TAT (from extraction to results)

Automated system

- Provides a convenient work flow through a streamlined automation system
- Minimizes contamination and human error

SAMPLE TYPES

- Cervical sample
- Self-collected vaginal sample

One Tube	Novaplex™ HPV28	Novaplex™ II HPV HR
Number of Targets	28	14

*Novaplex™ Assays are For Research Use Only. Not for Use in Diagnostic Procedures.



ANALYTES

Novaplex™ HPV28 Assay			Novaplex™ II HPV HR Assay					
19 High-Risk HPV Types:			9 Low-risk HPV types:			14 High-Risk HPV Types:		
HPV16	HPV45	HPV66	HPV6	HPV42	HPV54	HPV16	HPV35	HPV56
HPV18	HPV51	HPV68	HPV11	HPV43	HPV61	HPV18	HPV39	HPV58
HPV26	HPV52	HPV69	HPV40	HPV44	HPV70	HPV31	HPV45	HPV59
HPV31	HPV53	HPV73				HPV33	HPV51	HPV66
HPV33	HPV56	HPV82				HPV52	HPV68	
HPV35	HPV58							
HPV39	HPV59							

ORDERING INFORMATION

Assays	Volume (rxns)	Catalog No.
Novaplex™ HPV28 Assay	124	R-HP70522W
Novaplex™ II HPV HR Assay	124	R-HP7E00W



*Novaplex™ Assays are For Research Use Only. Not for Use in Diagnostic Procedures.

WORKFLOW

FOR EXTRACTION

Seegene Launcher
Operation Software



Seegene NIMBUS
Catalog No. 65415-03

Seegene STARlet
Catalog No. 67930-03

REAL-TIME PCR



Bio-Rad
CFX96™ Dx/Touch/Opus™
Purchase From Bio-Rad[^]

AUTOMATED DATA ANALYSIS



Seegene Viewer Software
Automated Data Analysis

** Extraction methods are not limited to the Seegene NIMBUS and Seegene STARlet.

[^] The CFX96™ Dx/Touch/Opus™ instrument is to be purchased directly from Bio-Rad. Seegene does not distribute the instrument in the U.S. Please contact Bio-Rad for ordering information.